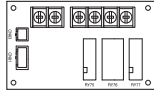
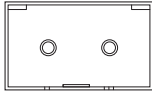
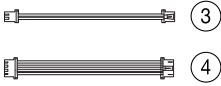
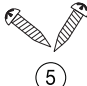


EXTERNAL CONTROLLER INSTALLATION

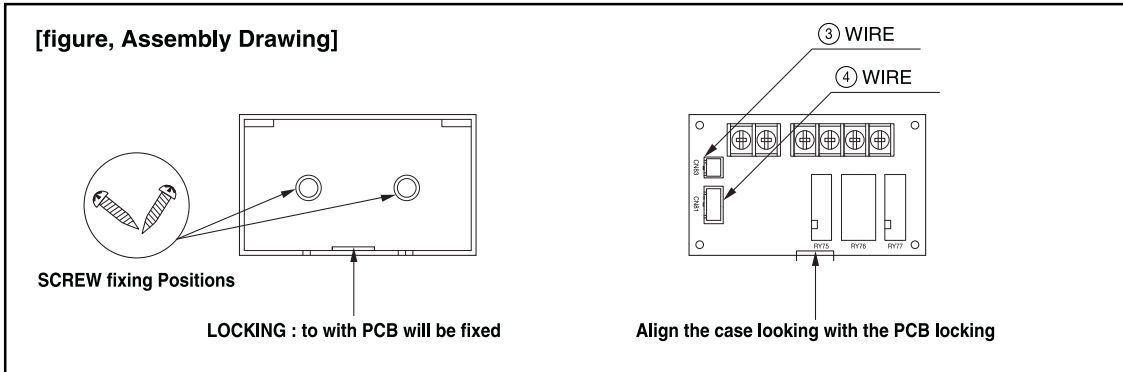
For DVM S Indoor Unit Installation

PARTS

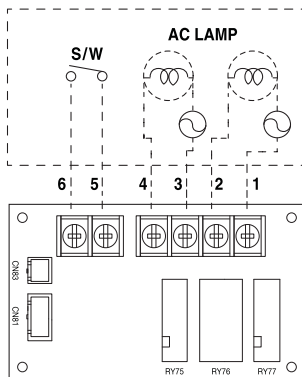
PRODUCT NAME	EXTERNAL CONTROLLER	PCB CASE	HANESS WIRES	SCREW
QUANTITY	1EA	1EA	1EA for EACH WIRE	2EA
SHAPE	 ①	 ②	 ③ ④	 ⑤

INSTALLATION

- (1) Fix ② PCB case inside the indoor unit control box or at an appropriate position with ⑤ screws.
- (2) After fixing PCB cases, attach the external controller PCB. (See the following figure, Assembly Drawing)



- (3) Connect ③ Wire(2p) between the external controller PCB CN83 and the indoor unit PCB CN83.
- (4) Connect ④ Wire(4p) between the external controller PCB CN81 and the indoor unit PCB CN81.
- (5) Circuit diagram of external controller's output.



Operation Specification according to Indoor Unit PCB DIP S/W Set up

WIRE NO.	OUTPUT STATE	
	External Contact Control Activated At Indoor Unit + Indoor Unit Set For Operation ON/OFF	External Contact Control Activated At Indoor Unit + Indoor Unit Set For Thermo-ON/OFF
1, 2	Error Check	
3, 4	COMP. Check	Operating Check
5, 6	Signal Input (TIMER)	

- ❖ (6) Setup indoor unit for external contact control and set for operation ON/OFF or Thermo-ON/OFF output with installer option settings.